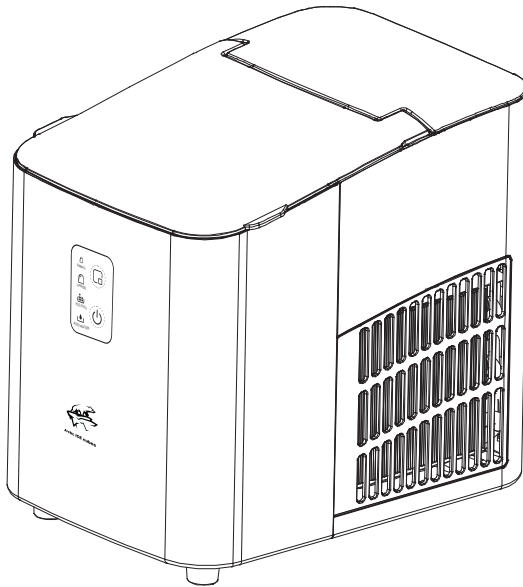


# INSTRUCTION MANUAL

## Portable Countertop Ice Maker



**Model: ICM1264**

THANK YOU FOR CHOOSING OUR ICE MAKER  
PLEASE READ THE MANUAL CAREFULLY BEFORE OPERATING

---

## IMPORTANT NOTICES

When using an electrical appliance, basic safety precautions should always be followed to reduce the risk of fire, electric shock, and/or injury, including the following:

1. Read all instructions before using.
2. Remove all packing material and carefully check your ice maker to ensure it is in good condition and that there is no damage to the ice maker or power cord and plug.
3. If the supply cord is damaged, it must be replaced by the manufacturer or its service agent or a similarly qualified person in order to avoid a hazard.
4. This appliance is not intended for use by persons (including children) with reduced physical, sensory or mental capabilities, or lack of experience and knowledge, unless they have been given supervision or instruction concerning use of the appliance by a person responsible for their safety. Children should be supervised to ensure that they do not play with the appliance.

This appliance can be used by children aged from 8 years and above and persons with reduced physical, sensory or mental capabilities or lack of experience and knowledge if they have been given supervision or instruction concerning use of the appliance in a safe way and understand the hazards involved. Children shall not play with the appliance. Cleaning and user maintenance shall not be made by children without supervision.

5. This appliance is intended to be used in household and similar applications such as
  - staff kitchen areas in shops, offices and other working environments;
  - farm houses and by clients in hotels, motels and other residential type environments;

–bed and breakfast type environments.

6. –Warning: Do not store explosive substances such as aerosol cans with a flammable propellant in this appliance.

–Warning: Keep ventilation openings, in the appliance enclosure or in the built-in structure, clear of obstruction.

–Warning: Do not use mechanical devices or other means to accelerate the defrosting process, other than those recommended by the manufacturer.

–Warning: Do not damage the refrigerant circuit.

–Warning: Do not use electrical appliances inside the food storage compartments of the appliance, unless they are of the type recommended by the manufacturer.

–WARNING: When positioning the appliance, ensure the supply cord is not trapped or damaged.

–WARNING: Do not locate multiple portable socket-outlets or portable power supplies at the rear of the appliance.

–WARNING : When disposing of the appliance, do so only at an authorized waste disposal centre. Do not expose to flame.

–WARNING: fill with potable water only.

7. The refrigerant (R600a) is flammable.



Caution: risk of fire / Flammable materials

The refrigerant isobutene (**R600a**) is contained within the refrigerant circuit of the appliance, a natural gas with a high level of environmental compatibility, which is nevertheless flammable. During transportation and installation of the appliance, ensure that none of the components of the refrigerant circuit becomes damaged.

If the refrigerant circuit should be damaged:

- Avoid opening flames and sources of ignition.

- Thoroughly ventilate the room in which the appliance is situated.
- 8. Before using the Ice maker for the first time, please wait 2 hours after positioning it, and keep the transparent lid open for at least 2 hours
- 9. Pure water is not allowed to be used on this unit, spring water is recommended.
- 10. Ensure the voltage is compliant with the voltage range stated on the rating label, and ensure the earthing of the socket is in good condition.
- 11. Do not upend this product or incline it over a 45° angle.
- 12. To protect against risk of electric shock, do not pour water on cord, plug and ventilation, immerse the appliance in water or any other liquid.
- 13. Unplug the appliance after using or before cleaning.
- 14. Keep the appliance 8cm from other objects to ensure the good heat releasing.
- 15. Do not use the accessories which are not recommended by Manufacturer.
- 16. Do not use the appliance close by flames, hot plates or stoves.
- 17. Do not switch on the power button frequently (ensure 5min. interval at least) to avoid the damage of compressor.
- 18. Do not use outdoors.
- 19. Never clean with scouring powders or hard implements.
- 20. Please keep the instruction manual.
- 21. To avoid contamination of food, please respect the following instructions:
  - Opening the door for long periods can cause a significant increase of the temperature in the compartments of the appliance.
  - Clean regularly surfaces that can come in contact with food and

accessible drainage systems.

- Clean water tanks if they have not been used for 48 h; flush the water system connected to a water supply if water has not been drawn for 5 days.

- If the refrigerating appliance is left empty for long periods, switch off, defrost, clean, dry, and leave the door open to prevent mould developing within the appliance.

22. Regarding the information pertaining to the use of the appliance, please refer to the paragraphs below.
23. Component parts shall be replaced with like components and that servicing shall be done by factory authorized service personnel, so as to minimize the risk of possible ignition due to incorrect parts or improper service.
24. When service personnel during service operations, if it is possible to touch the motor metal enclosure/electrical control box cover, please power off for service operations.

## **SPECIFICATIONS**

Model Number: ICM1264

Voltage: 110-120V/60Hz

Power Consumption: 120 W

Daily Ice Output: 12kg(26.45lbs)/24 hours

Ice Storage Capacity: 1.0L/330g(0.66lbs)

Water Reservoir Capacity: 1.0L

N.W: 6.2kg/13.66lbs

G.W: 6.8kg/15lbs

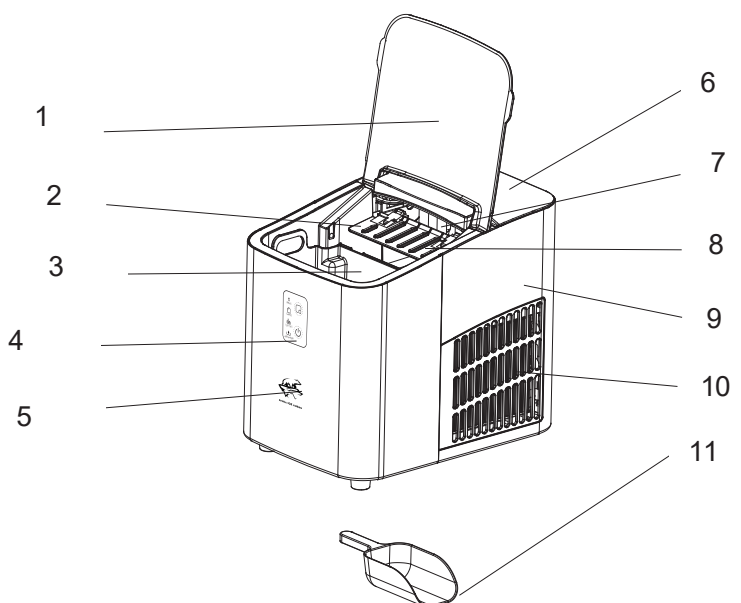
Compression-Type Refrigeration: 120V/60Hz

Cooling Agent: R600a environmental friendly refrigerant

Max Overall Dimensions (WXDXH): 205X268X282mm  
/8X10.5X11.1inch

Packing Dimensions (LXWXH): 235X318X290mm  
/9.2X12.5X11.4inch

## DESCRIPTION



- |                        |                     |
|------------------------|---------------------|
| 1. Transparent lid     | 7. Evaporator       |
| 2. Liner               | 8. Ice shovel board |
| 3. Ice collecting tray | 9. Rear housing     |
| 4. Control panel       | 10. Vents           |
| 5. Front housing       | 11. Ice shovel      |
| 6. Top Lid             |                     |

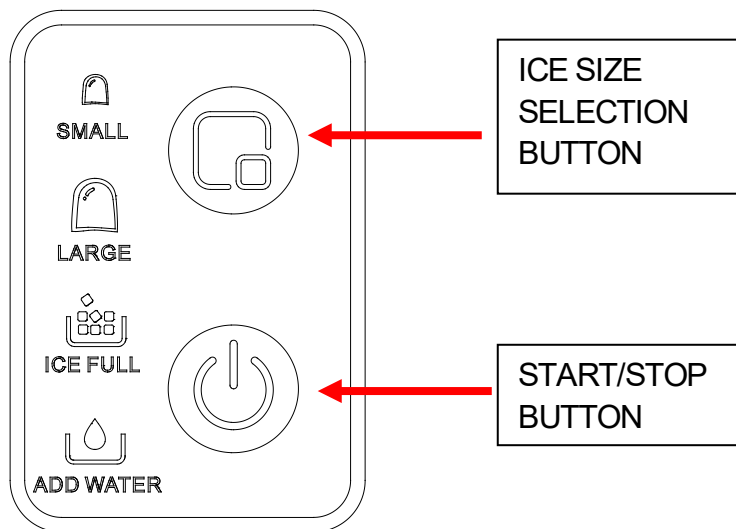
## FEATURE

- ✧ Quick ice making
- ✧ Prompt when the ice is full and water is insufficient
- ✧ Bullet transparent ice
- ✧ Cleaning function
- ✧ 8 pcs ice can be made in nine minutes

## WARNING

1. During transportation, do not tilt the machine more than 45 degrees, do not reverse the machine. This may damage the compressor and the sealing system.
2. Remove all packing materials, check the machine carefully and make sure that the machine, power cord and plug are normal.
3. The machine should be on a level surface. To ensure sufficient ventilation, the distance of the back of ice maker to the wall should be at least 150mm, it should be away from the oven, radiator or other heat source.
4. Before using the machine for the first time, place the machine and leave the transparent cover open for at least two hours.
5. Make sure that the home voltage is consistent with the voltage indicated by the machine.
6. When the ambient temperature is lower than 15 degrees, please choose small ice. When the ambient temperature is higher than 30 degrees, it is recommended to choose large ice.
7. Do not use chemicals, acidic or alkaline liquids to make ice.

## CONTROL PANEL OPERATION



SMALL: small ice indicator light

LARGE: large ice indicator light

ICE FULL: ice full alarm

ADD WATER: water shortage alarm

1. **START/STOP:** Plug in power, the machine is in standby mode, and the large ice indicator light flashes green. Press the **START/STOP** button, and the machine starts to work in the large ice mode with the large ice making icon being solid. After the ice making is completed, the ice will be discharged, and the machine enters the ice shoveling function, and so on.
2. **ICE SIZE SELECTION BUTTON:** Press the large and small ice selection button to switch and select the large and small ice mode.
3. **CLEANING FUNCTION:** Plug in power, press and hold down the **START/STOP** button for 3 seconds, the machine enters the cleaning function, and the four lights flash alternately. Do not

disconnect the power supply during cleaning. After cleaning, the machine will automatically enter the standby mode.

4. **ADD WATER:** water shortage alarm: when the light is on, it means water shortage in the water tank. You need to add water and press the **START/STOP** button to restart the machine.
5. **ICE FULL:** ice full alarm. When the ice reaches the maximum amount of ice storage container, the **"ICE FULL"** indicator light is on and the machine stops. At this time, the ice needs to be poured out. When the ice position is lower than the full sensor position, the machine will restart automatically.

## OPERATING INSTRUCTIONS

### Step 1

Open the lid and take out the ice collecting tray and add water to the reservoir.

Note: There is a maximum scale MAX in the reservoir. The water should not exceed the MAX position. If the water exceeds the maximum scale MAX, you need to open the bottom drain plug, release the excess water, and cover with the transparent lid.

### Step 2

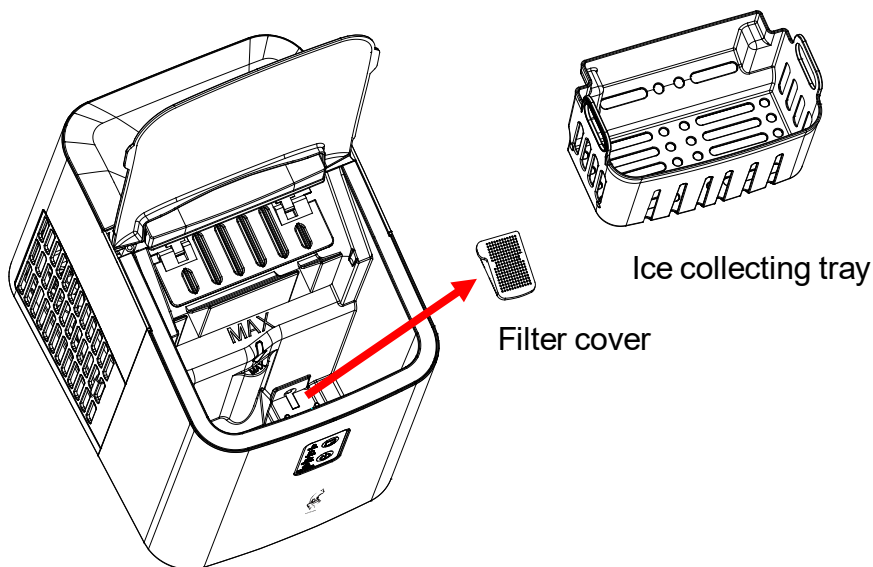
Plug in power, press the **START/STOP** button to start the machine.

### CAUTION

1. During the three cycles used for the first time, the ice produced is small and irregular.
2. When the ice collecting tray is full, please take out the ice immediately, do not let the ice overflow the ice collecting tray.

## CLEANING & USE GUIDANCE

1. Clean the inner liner, ice collecting tray, water tank and ice shovel frequently. When cleaning, unplug the unit and remove the ice cubes. Use a diluted solution of water and vinegar to clean the inside and the outside surface of the Ice maker. Rinse thoroughly before use.
2. Keep ventilation openings in the appliance enclosure, or in the built-in structure, clear of obstruction. Do not use mechanical devices or other means to accelerate the defrosting process, other than those recommended by the manufacturer.
3. Reuse the machine after being idled for a period of time, it may not be able to pump enough water up for air blockage. In this case, the water shortage indicator sign is displayed, just repress **START/STOP** button to restart the ice maker.
4. To ensure the cleanness of ice, please change water for water reservoir at least once one day. If do not use for a long time, please drain the water out and clean it up.
5. If the compressor does not work due to lack of water, ice full, power failure, etc, it will delay for 3 minutes to start up after restarted.
6. Always use portable water before starting ice production either at initial installation or after a long shut-off period.
7. According to the actual use of the machine, the filter screen in the water tank shall be regularly cleaned after disassembly to prevent the water inlet from being blocked by incrustation scale. As shown in the figure below. Take out the ice collecting tray and filter cover from the water tank in turn, clean the filter cover with clean water with a brush, and then put it back in place.



## TROUBLESHOOTING

1. Please note, if a power failure occurs due to disconnection of the power cord, or the power button has been pushed off during an ice making cycle, small ice chips may formed and lodge in the automatic shovel causing it to jam. If this occurs, the ice chips may be removed by disconnecting the power cord and gently pushing the shovel to the rear of the cabinet and removing the ice chips, then restarting.
2. Please check if the water reservoir is flat when the ice shovel can not remove the ice to ice collecting tray. If not, please push the ice shovel gently by finger, then press **START/STOP** button to restart.

<b>PROBLEM</b>	<b>POSSIBLE CAUSE</b>	<b>SUGGESTED SOLUTIONS</b>
The compressor works abnormally with a buzzing noise	The voltage is lower than recommended	Stop the ice maker and do not restart until the voltage is normal.
Water shortage indicator light is on	1. There is no water 2. The pump is full of air	1. Add some water until it reaches MAX position 2. Press START/STOP button to restart the machine
Indicator lights on control panel are not on	Blown fuse/No power	Replace fuse /Turn power on
The ice made is too large and with pieces sticking together.	Ice of previous cycles left in the water tray	Take out the ice under the standby state
The ice making process was correct, but no ice came out?	1. The compressor has no refrigerant 2. Compressor damaged 3. Fan motor damaged	Call the service hotline
All indicator lights flash at the same time.	1. The water box is blocked by ice. 2. The motor is stuck, or the motor falls off, or the motor is damaged 3. Micro switch damaged	1. Take out the ice under the ice shovel, plug in power again, and press the POWER button. After 3 minutes, the machine will restart automatically. 2. Call the service hotline
The machine has been working, but the water has been warming	Solenoid broke down	Replace the solenoid valve
When the ice is full, the machine does not display the ice full icon	1. Ice full sensor damaged 2. Solar light interference	1. Replace the ice full sensor 2. Making ice indoor 3. Call the service hotline

## **WARNING**

1. If the power cord is damaged, it must be replaced by the manufacturer, its service agent or a similarly qualified person in order to avoid a hazard.
2. Fill with potable water only.
3. It is normal for the compressor and condenser surface to reach temperatures between 70° C and 90° C during operation and surrounding areas may be very hot.
4. Due to fast freezing, ice cubes may opaque. This is air trapped in the water and will not affect quality or taste of ice.
5. This appliance is not intended for use by persons (including children) with reduced physical, sensory or mental capabilities or lack of experience and knowledge unless they have been given supervision or instruction concerning use of the appliance by a person responsible for their safety.
6. Children should be supervised to ensure that they do not play with the appliance.
7. Do not immerse the machine in water.

### **Correct Disposal of this product**



This marking indicates that this product should not be disposed with other household wastes throughout the EU. To prevent possible harm to the environment or human health from uncontrolled waste disposal, recycle it responsibly to promote the sustainable reuse of material resources. To return your used device, please use the return and collection systems or contact the retailer where the product was purchased. They can take this product for environmental safe recycling.





